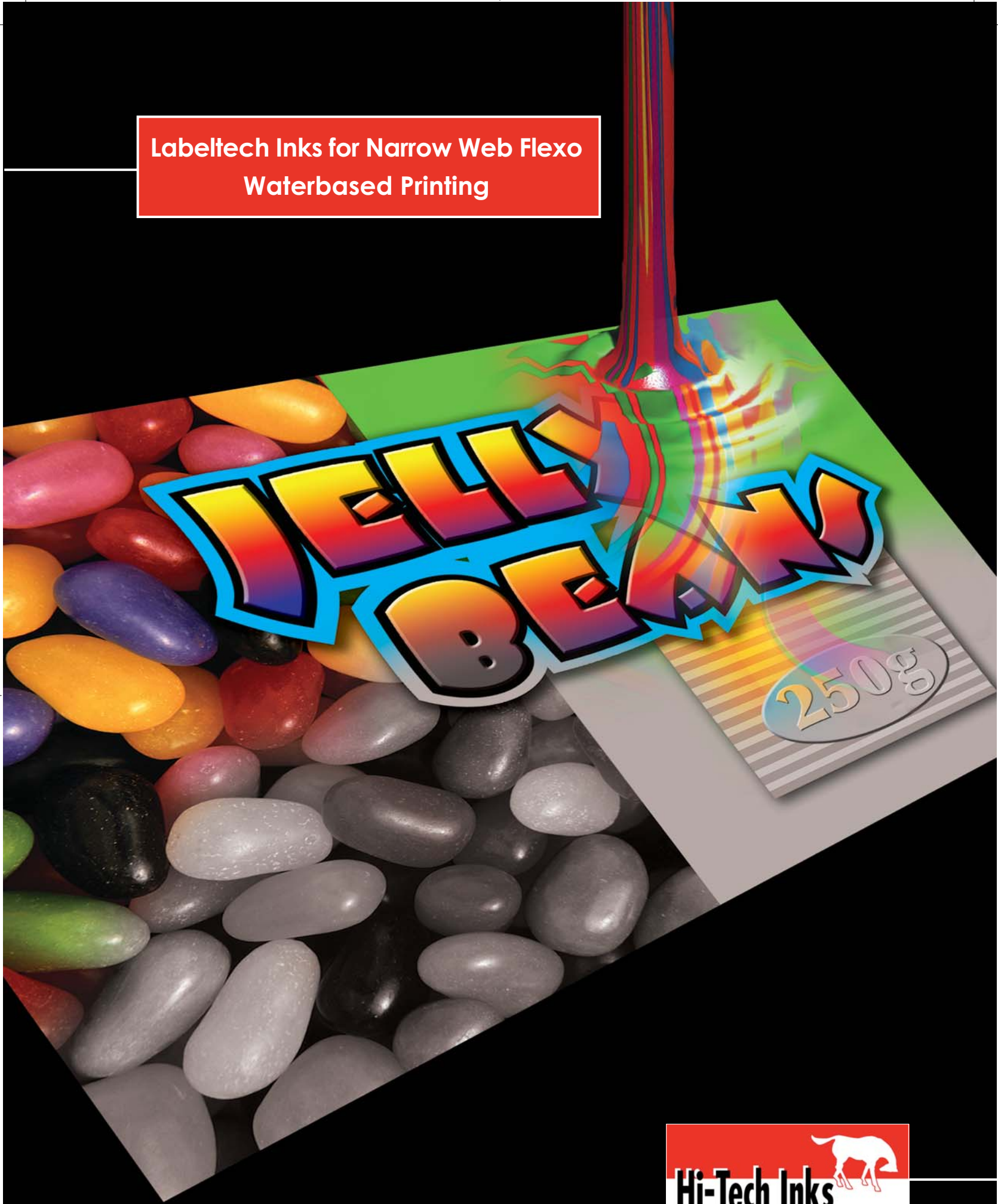




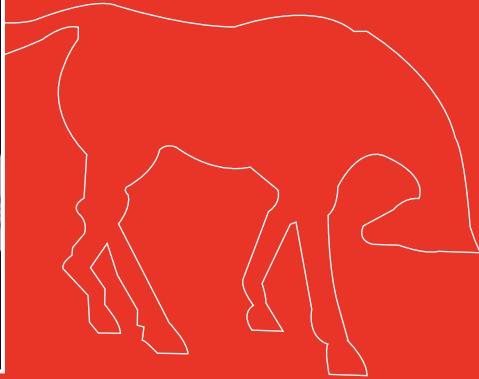
**Labeltech Inks for Narrow Web Flexo
Waterbased Printing**



PROGRESS THROUGH DYNAMISM AND INNOVATION



PROGRESS THROUGH DYNAMISM AND INNOVATION



Labeltech Inks for Narrow Web Flexo Waterbased Printing

Hi-Tech Inks was established in the late 80's in response to the identification of a local market niche to supply locally manufactured, high quality liquid inks. Hi-Tech Inks has expanded it's resources namely waterbased Label Tech Inks for Narrow Web Flexographic Printing on the full range of presses i.e. Aquaflex, Markandy, Gallus, and Nilpeter.

Hi-Tech Inks is extremely aware that it takes technology to stay ahead of the ever-changing markets, customer specifications and consumer demand.

We are therefore proud to announce the latest technology in Flexographic Narrow Web label printing. A break through we would like to share with you. Guaranteed to improve your print quality.

The technical and quality advantages that can be attained from the use of the Labeltech range of printing inks are endless.

- Waterbased - No more fire safety legislation or expensive insurance policies.
- Excellent Rewettability - No more tiresome wash up of plates.
- Excellent Press Stability - No more amine adjustment.
- Excellent Printability - No more costly customer rejections.
- Excellent Surface Tension - No more difficult substrates.
- Environmentally Friendly - Meets continuous marketplace demands to reduce V. O. C's.
- Longer Plate Life - Reduced costly plate replacements to name but a few.

Contact us... You can only benefit from this market of waterbased flexographic printing for any type of substrate.

HI - TECH INKS (PTY) LTD DURBAN
4 Teakwood Road, Jacobs,
Durban
Tel: +27 31 465 0601
E:Mail: info.dbn@hitechinks.co.za

HI - TECH INKS (PTY) LTD GAUTENG
69 Brunton Circle, Founders View South,
Edenvale
Tel: +27 11 372 4651
E:Mail: info.jhb@hitechinks.co.za

HI - TECH INKS (PTY) LTD CAPE
16 Moody Avenue, Epping 1,
Cape Town
Tel: +27 21 532 0323
E:Mail: info.cape@hitechinks.co.za